

MAP LABEL	AIDS TO NAVIGATION	PLANE COORDINATES		LATITUDE	LONGITUDE
		X	Y		
R*6	LT. BUOY-8 (05/21)	768.489	875.506	18°26'13.54"	66°06'33.33"
G*7	LT. BUOY-7 (05/21)	769.006	874.738	18°26'05.91"	66°06'27.98"
G*9	LT. BUOY-9 (05/21)	769.833	873.823	18°25'56.84"	66°06'19.40"

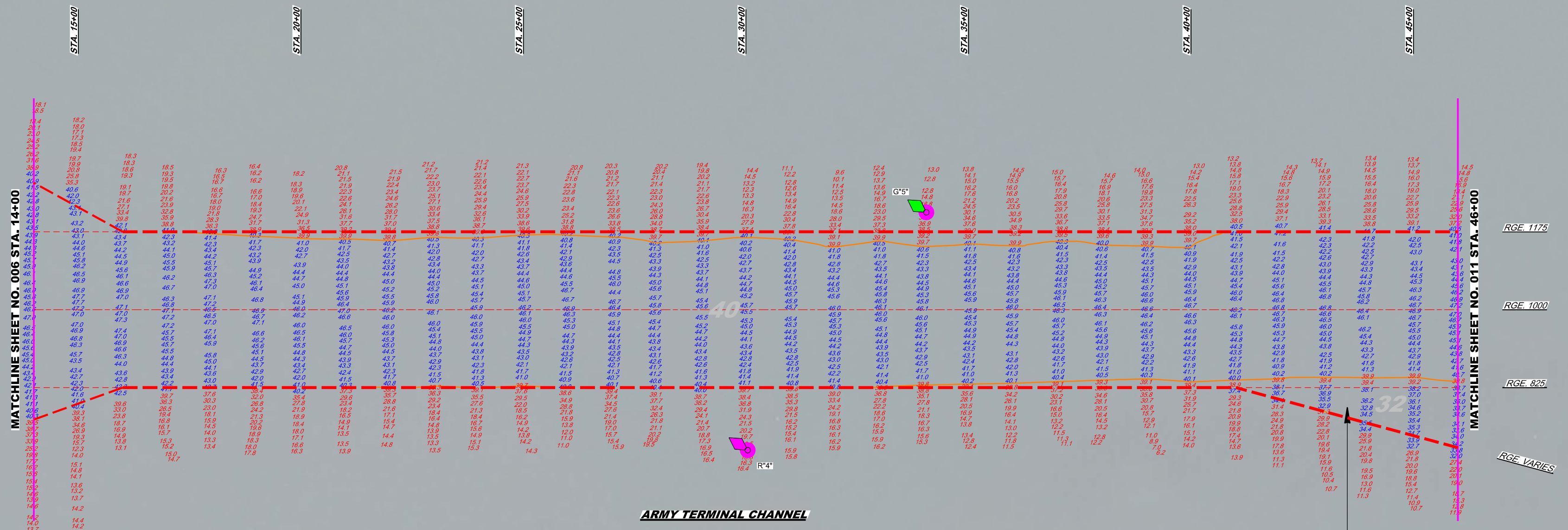


GRAPHIC SCALE
1" = 100'
0 100' 200'

NOTES:
1. REFER TO SURVEY NO. 21-162.
2. SEE SHEET NO. 1 FOR SURVEY NOTES.

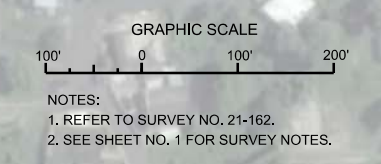
MAP LABEL	AIDS TO NAVIGATION	PLANE COORDINATES		LATITUDE	LONGITUDE
		X	Y		
R*4	LT. BUOY-1 (0521)	768.341	877.289	18°26'31.22"	66°06'34.84"
G*5	LT. BUOY-5 (0521)	768.900	876.923	18°26'27.58"	66°06'29.04"

Bahia de Puerto Nuevo



ARMY TERMINAL CHANNEL

SABANA APPROACH CHANNEL



DEPARTMENT OF THE ARMY
JACKSONVILLE DISTRICT, CORPS OF ENGINEERS
JACKSONVILLE, FLORIDA

Drawn by: GHR
Checked by: GHR
Designed by: WRM
DWG No: WRM
File No: WRM
Date: MAY 2021

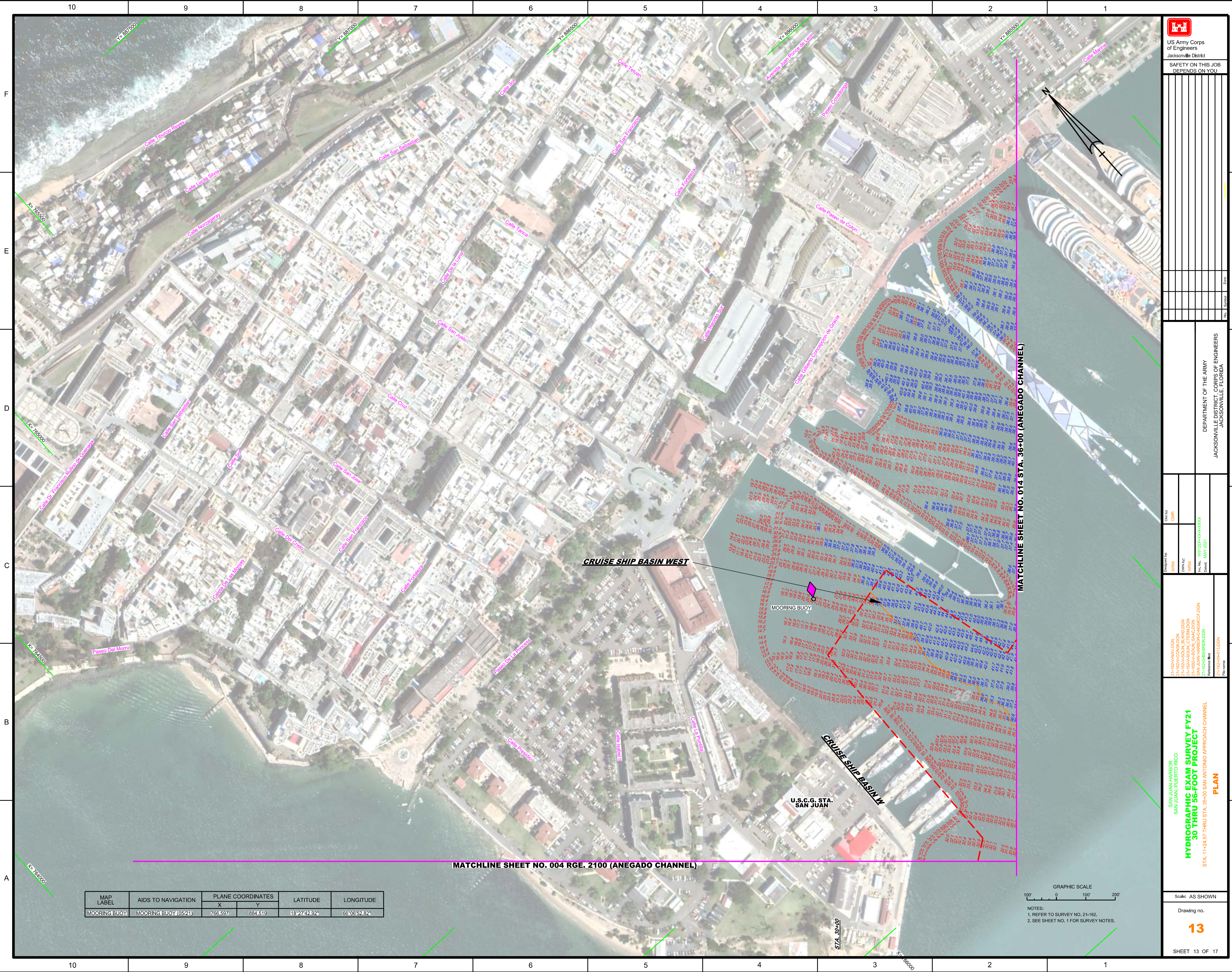
XXXXXXXXXXXXXXXXXXXX
Z:\162\ACON\162.DGN
Z:\162\ACON\162.DGN
Z:\162\ACON\162.DGN
Z:\162\ACON\162.DGN
Z:\162\ACON\162.DGN
Z:\162\ACON\162.DGN


Scale: AS SHOWN
Drawing no. 12
SHEET 12 OF 17

MATCHLINE SHEET NO. 006 STA. 14+00

MATCHLINE SHEET NO. 011 STA. 46+00

SAN JUAN HARBOR
SAN JUAN, PUERTO RICO
HYDROGRAPHIC EXAM SURVEY FY21
30 THRU 56-FOOT PROJECT
STA. 14+00 THRU STA. 46+00 ARMY TERMINAL CHANNEL
PLAN




 US Army Corps of Engineers
 Jacksonville District
 SAFETY ON THIS JOB
 DEPENDS ON YOU

DEPARTMENT OF THE ARMY
 JACKSONVILLE DISTRICT, CORPS OF ENGINEERS
 JACKSONVILLE, FLORIDA

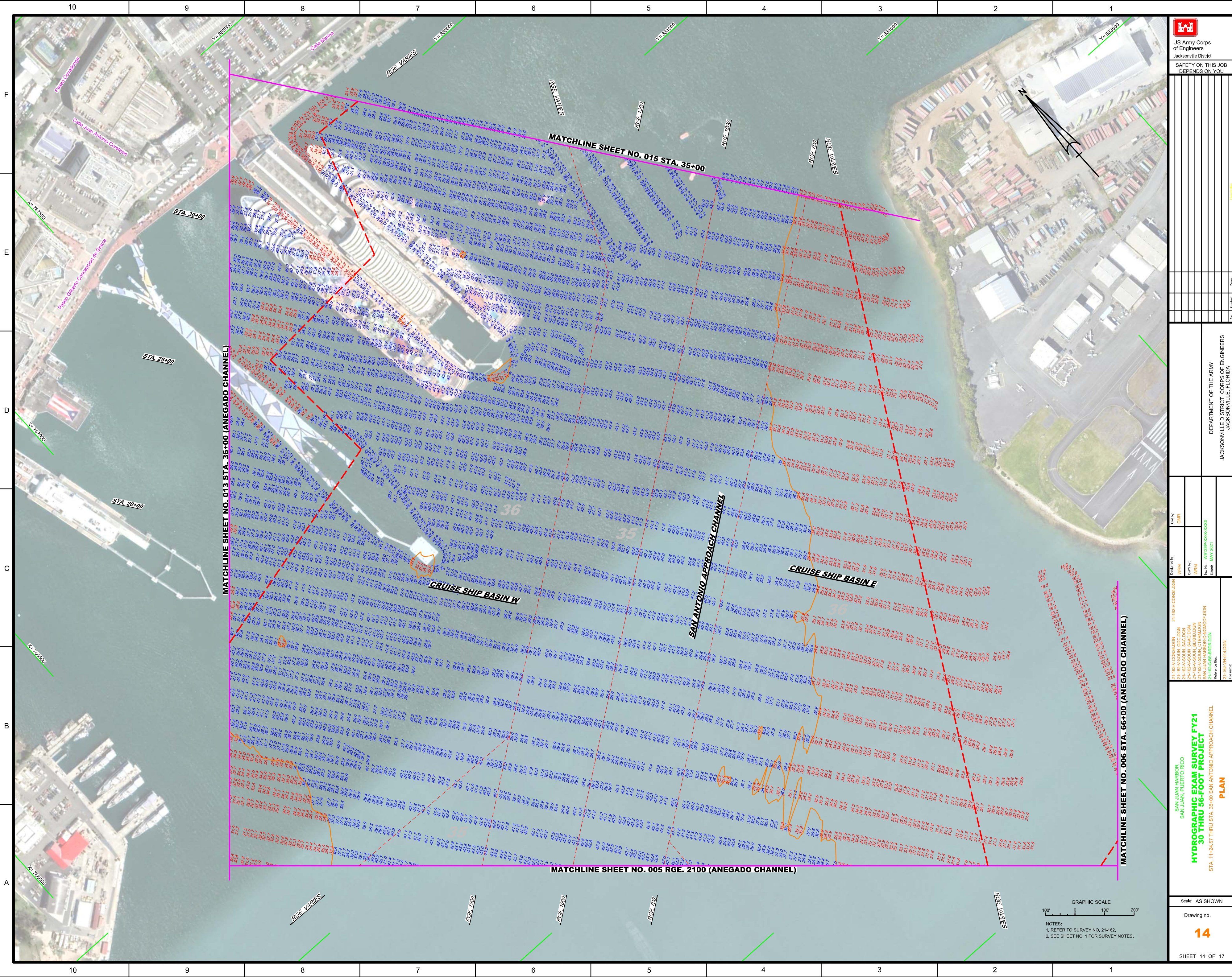
Call by: GHR
 Designed by: WRM
 Drawn by: WRM
 File No: W12252-000-0000
 Date: MAY 2021

SAN JUAN HARBOR
 SAN JUAN, PUERTO RICO
**HYDROGRAPHIC EXAM SURVEY FY21
 30 THRU 56-FOOT PROJECT**
 STA. 11+24.57 THRU STA. 35+00 SAN ANTONIO APPROACH CHANNEL
PLAN

Scale: AS SHOWN
 Drawing no.
13
 SHEET 13 OF 17

MAP LABEL	AIDS TO NAVIGATION	PLANE COORDINATES		LATITUDE	LONGITUDE
		X	Y		
MOORING BUOY	MOORING BUOY (0521)	755.597	884.519	18°27'42.92"	66°06'52.82"

GRAPHIC SCALE
 100' 0 100' 200'
 NOTES:
 1. REFER TO SURVEY NO. 21-162.
 2. SEE SHEET NO. 1 FOR SURVEY NOTES.

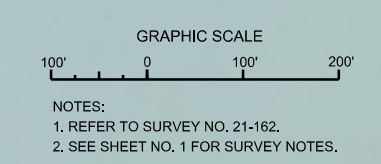


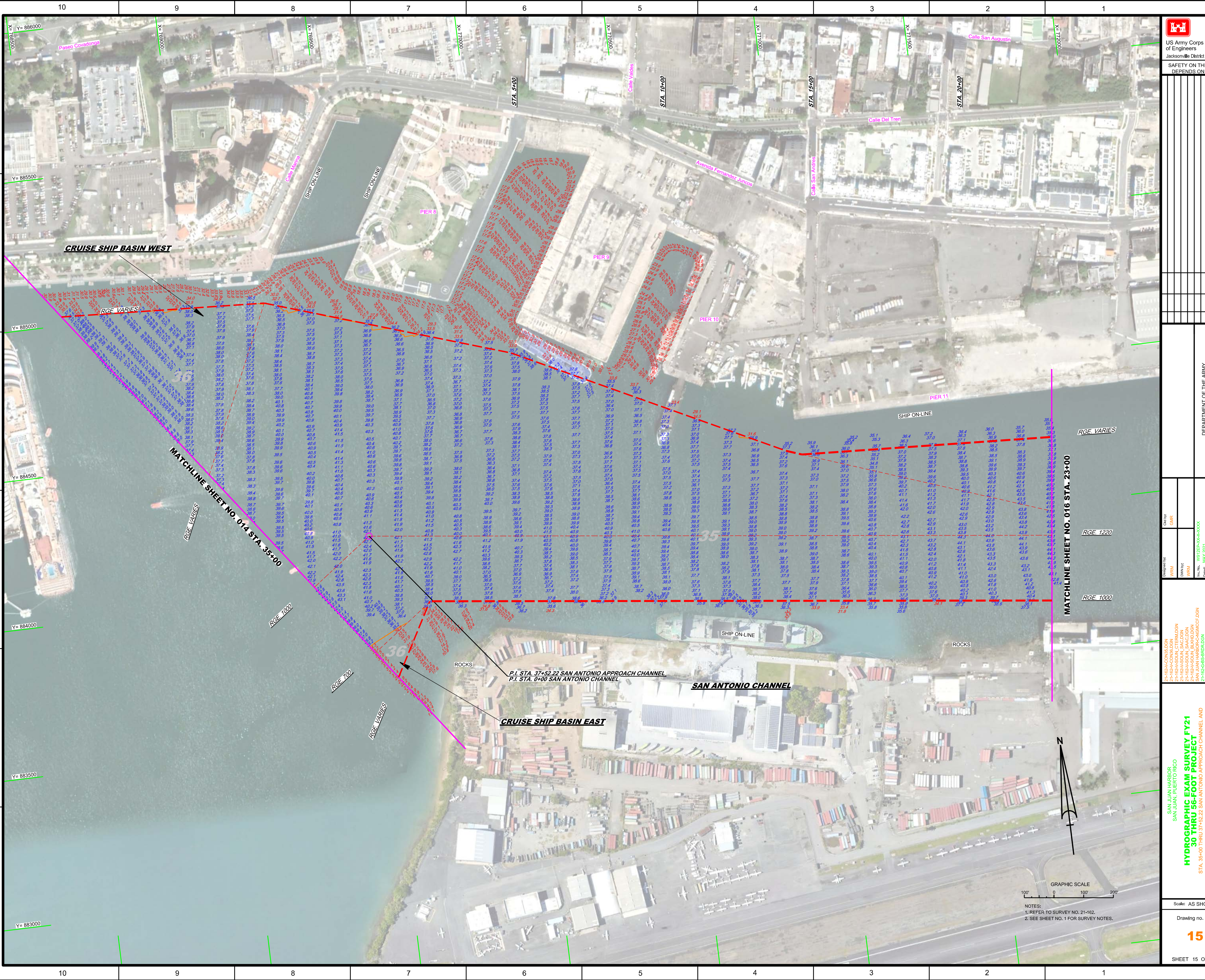
Scale	AS SHOWN
Drawing no.	14
Sheet	14 OF 17
Author	21-182A-CON-01.DGN
Checked by	GHR
Designed by	WRM
Drawn by	WRM
File No.	WR182A-CON-01.DGN
Date	MAY 2021

DEPARTMENT OF THE ARMY
JACKSONVILLE DISTRICT, CORPS OF ENGINEERS
JACKSONVILLE, FLORIDA

21-182A-CON-01.DGN
21-182A-CON-02.DGN
21-182A-CON-03.DGN
21-182A-CON-04.DGN
21-182A-CON-05.DGN
21-182A-CON-06.DGN
21-182A-CON-07.DGN
21-182A-CON-08.DGN
21-182A-CON-09.DGN
21-182A-CON-10.DGN
21-182A-CON-11.DGN
21-182A-CON-12.DGN
21-182A-CON-13.DGN
21-182A-CON-14.DGN
21-182A-CON-15.DGN
21-182A-CON-16.DGN
21-182A-CON-17.DGN
21-182A-CON-18.DGN
21-182A-CON-19.DGN
21-182A-CON-20.DGN
21-182A-CON-21.DGN
21-182A-CON-22.DGN
21-182A-CON-23.DGN
21-182A-CON-24.DGN
21-182A-CON-25.DGN
21-182A-CON-26.DGN
21-182A-CON-27.DGN
21-182A-CON-28.DGN
21-182A-CON-29.DGN
21-182A-CON-30.DGN

SAN JUAN HARBOR
SAN JUAN, PUERTO RICO
**HYDROGRAPHIC EXAM SURVEY FY21
30 THRU 56-FOOT PROJECT**
STA. 11+24.57 THRU STA. 35+00 SAN ANTONIO APPROACH CHANNEL
PLAN





US Army Corps of Engineers
 Jacksonville District
 SAFETY ON THIS JOB
 DEPENDS ON YOU

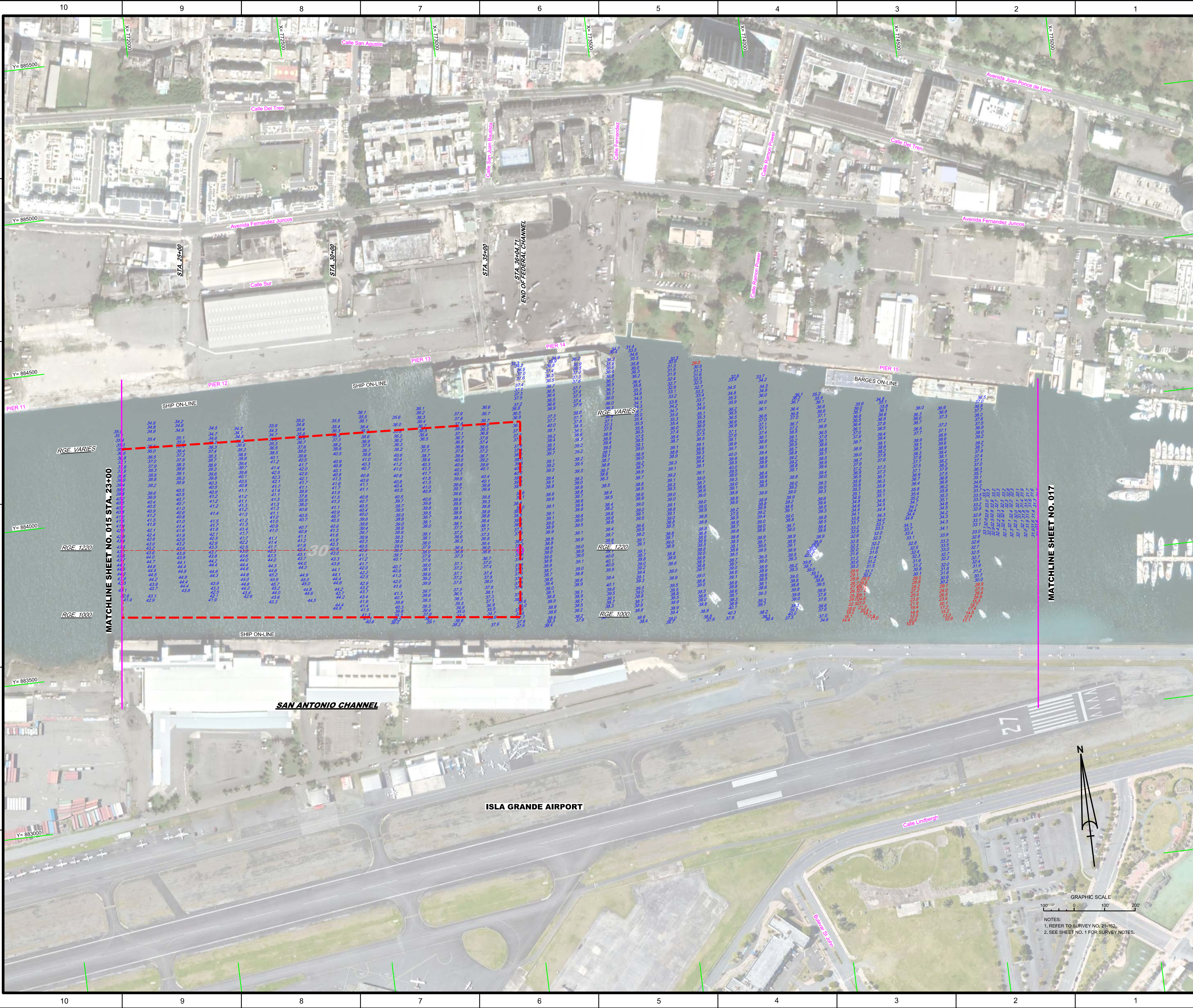
DEPARTMENT OF THE ARMY
 JACKSONVILLE DISTRICT, CORPS OF ENGINEERS
 JACKSONVILLE, FLORIDA


Client: GHR
 Drawn by: WRM
 Checked by: WRM
 Date: MAY 2021

Project: SAN JUAN HARBOR EXAM SURVEY FY21
 30 THRU 56-FOOT PROJECT
 STA. 0+00 THRU STA. 23+00 SAN ANTONIO CHANNEL AND
 STA. 0+00 THRU STA. 37+52.22 SAN ANTONIO APPROACH CHANNEL
PLAN

Scale: AS SHOWN
 Drawing no. **15**
 SHEET 15 OF 17

GRAPHIC SCALE
 0 100 200
 NOTES:
 1. REFER TO SURVEY NO. 21-162.
 2. SEE SHEET NO. 1 FOR SURVEY NOTES.





US Army Corps
of Engineers
Jacksonville District

SAFETY ON THIS JOB
DEPENDS ON YOU

DEPARTMENT OF THE ARMY
JACKSONVILLE DISTRICT, CORPS OF ENGINEERS
JACKSONVILLE, FLORIDA

San Juan Harbor
San Juan, Puerto Rico

**HYDROGRAPHIC EXAM SURVEY FY21
30 THRU 56-FOOT PROJECT**

STA. 23+00 THRU STA. 36+04.71 SAN ANTONIO CHANNEL

PLAN

Scale: AS SHOWN

Drawing no.
16

SHEET 16 OF 17

